

# meadows Messenger

published by the Fairlington Meadows Council of Co-owners in Historic Fairlington

## In this Issue

Recreation Passes  
Page 2

Insurance Claims  
Page 2

New Table  
Page 2

Meadows Mile  
Page 3

Paper Shredding  
Page 3

Composting  
Page 3

Website Provides Current  
Information

[www.fairlington.org/  
meadowsindex.htm](http://www.fairlington.org/meadowsindex.htm)

## Trash, Recycling Survey Results Detail Preferences of Residents

The Fairlington Meadows Ad Hoc Trash and Recycling Committee conducted an online survey during the spring in which 151 total responses were received. Many unit owners and renters are interested in exploring changes to our current trash and recycling services.

What did the survey tell us? More than half of those who responded told us that they put their trash outside three or fewer times per week and almost a quarter of the residents put their trash outside to be picked up all six days that we offer trash removal services.

Respondents indicated that they are most focused on the frequency of trash removal with a focus on pest control, environmental concerns, aesthetics and convenience (distance) of trash removal options from their units.

If trash removal methods change from the current method of placing plastic trash bags

*(continued on page 4)*

## VDEQ provides overview of nearby ground contamination

The Virginia Department of Environmental Quality (VDEQ) shared results of its multi-year investigation into contaminants found in ground water beneath Fairlington Glen and a segment of Fairlington Meadows as caused by an old dry-cleaning establishment that operated out of the Fairlington Shopping Center many years ago and improperly disposed of dry cleaning solvents. That business no longer exists. Testing for possible contamination has concluded; a final report has been issued and approved; and remedial steps have been taken where appropriate.

Residents of Fairlington Glen, Fairlington Meadows, Board members from both associations along with Virginia Representative Mark Levine and Arlington County Board Member Libby Garvey as well as officials from the Arlington and Alexandria

*(continued on page 4)*



## Recreation passes go to owners or tenants, not both

Recreation passes are cards that allow those named on the cards to utilize the recreational facilities within Fairlington Meadows to include the tennis courts, baseball court, swimming pool, playground and other recreational facilities that may be established in the future. They are issued to either the resident or to the non-resident owner of a Fairlington Meadows unit, but not to both. Recreation passes must be signed by the holder of the pass and must be presented to use the swimming pool, tennis courts and other recreational facilities on the property.



Each unit is permitted one Recreation pass per resident of that unit. If absentee owners of a unit want to use the Recreation passes, then their tenants are not eligible for Recreation passes.

Recreation passes cannot be used by any person other than the one named on the pass, except for the resident's children who are being watched by a nanny or babysitter.

When accessing the swimming pool, nannies and babysitters must bring the parent's recreation pass plus a statement signed by the parent, which clearly assigns

responsibility for the children's welfare to the sitter and gives the sitter permission to use the pool. Nannies and babysitters may not bring guests to the swimming pool, including children, other than Meadows children for whom they are caring.

## Management of insurance claims clarified

The Board passed a resolution during the May meeting entitled "Management of Insurance Claims, Apportionment of Responsibility for Uninsured Losses and Payment of the Insurance Deductible," which has been posted on the Fairlington Meadows web site here: <http://www.fairlington.org/MeadowsDocuments.htm>. Unit owners are encouraged to review the policy that is posted online.

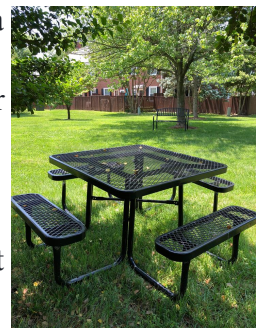
The policy discusses the Condominium's casualty loss involving the Council's master insurance coverage and whether losses are appropriate for submission as a claim under the master insurance policy as well as who is responsible for payment of the insurance deductible.

## New Table and Benches Installed

The picnic table that was installed last season near the playground has been very well received and is used regularly. With that in mind, a new picnic table was recently placed in the green space behind Courts 2 and 3 along with two new metal benches for residents who live nearby to enjoy.

It's not always ideal weather to make a splash in the pool, but most days it's comfortable to sit on a bench or enjoy a meal in the shade. The benches are sturdy, but lightweight enough to move in the shade of nearby trees. The picnic table is also quite sturdy and may take a little more muscle-power to move into the shade, but please feel free to do so. However, the benches and picnic table are to remain in the common area behind Courts 2 and 3.

Additionally, a few new benches also have been placed in the front of a handful of other courts that have space to accommodate them.

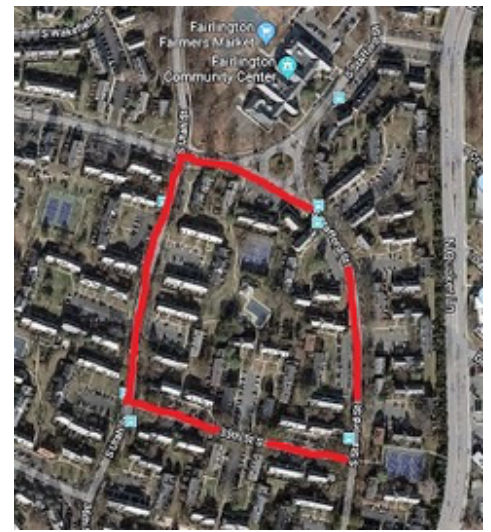


## The Meadows has a measured mile

Looking for a reason get outside and enjoy the fresh air and get in a little exercise? How about walking a Meadows Mile?

This image is a map of a half-mile loop around the sidewalks in Fairlington Meadows. Make the loop once and you've walked a half mile. Make the loop twice and you've walked the Meadows Mile!

Keep track of your mileage and let us know if you're able to walk 100 Meadows Miles by the end of the year. Invite your neighbors to join you or challenge them to see who can walk the most Meadows Miles!



## Meadows residents can take advantage of nearby free paper shredding

Do you have a lot of paper items that needs to be shredded? If so, Fairlington Meadows residents can take advantage of our community's convenient location near the Arlington County Inert Materials and Scrap Metal Drop-off Facility at 4300 S. 29<sup>th</sup> Street, just off of S. Arlington Mill Drive, where residents may drop off paper items to be shredded.

Arlington County offers free paper shredding for residents the first Saturday of each month from 8 a.m. to 4:30 p.m. with a limit of two boxes or two paper bags per person. Items can include paper products including staples and paper clips, checks and checkbooks, however magazines, catalogs, credit cards, phonebook-sized materials are not accepted.

## Meadows residents can compost conveniently

The recent Fairlington Meadows trash and recycling survey indicated that there is some community interest in composting, which is a wonderful way to reduce disposal of items such as yard and food waste. Arlington County residents are permitted to drop off food scraps at the Earth Products Recycling Yard at 4300 S. 29th Street, just off S. Arlington Mill Drive, in two green organics carts at the yard's scale house, at the top of the hill, during normal business hours. The yard is open Monday through Friday from 5 a.m. to 9 p.m. and Saturdays from 6:30 a.m. to 6 p.m. for food scrap drop-off.

According to the County's web site, the deposited scraps are processed in an on-site, in-vessel composter, with the results made available to the Department of Parks and Recreation for landscaping projects in County public spaces. Acceptable materials for food scraps drop-off include fruits and vegetables; food soiled paper such as paper towels, napkins and paper plates; coffee grounds, filters and tea bags; breads, grains and pasta; meat and seafood including bones; and plate scrapings.

On Sundays at the Fairlington Farmers Market, residents can also drop off their compost items, which the Arlington County will pick up. Those interested in this neighborhood compost drop-off should place their loose items or those contained in paper bags in the bins at the S. Utah Street entrance to the market. It is recommended that residents store their food scraps in a sealed container until market day.

Food scrap drop-offs for the County are also collected at the Columbia Pike Farmers Market on Sundays.



outside in front of each unit to a different method of disposal, survey respondents were split as to whether trash and recycling should be placed in large rigid containers that are centrally located versus requiring that trash be placed in a plastic bag in a small versus lidded hard-sided container on the porch versus requiring that all trash (not recycling) be placed in large rigid centrally-located containers.

Nearly half of residents who responded to the survey expressed an interest in exploring an option to compost. You'll see another article in this newsletter on convenient nearby composting options for residents to consider.

Approximately half of those who completed the survey would be interested in a second day of recycling pick-up each week.

The Board will continue to work with the Ad Hoc Trash and Recycling Committee on exploring these and possibly other trash service options in an effort to provide efficient trash and recycling services for our community.

The Board thanks the members of the Committee for their continued dedication to the Fairlington Meadows community and the time and effort that they have given toward this issue and continue to give.

Health Departments attended the July 9th public presentation at the Fairlington Community Center. VDEQ's Northern Regional Director, Thomas Faha, initiated the presentation with an overview of the project from its inception to present day and a description of the environmental issue. The presentation concluded with planned next steps. These steps involve the identification of locations for the installation of monitoring wells in Fairlington Glen and Fairlington Meadows for future tracking and mitigating effects of the contaminant flow.

During the meeting, a graphic representation of the contaminant "plume," which extends from the Fairlington Centre across Quaker Lane and under portions of Fairlington Glen, were displayed. Scientific context was provided and basic facts about chemical decomposition of the contaminant in question were outlined.

Throughout the meeting, audience members were encouraged to ask questions. Historic context and details of the issue were provided including a timeline of investigative events starting with the discovery of the problem to current remedial actions. Other questions probed the evolution of the contaminant flow, the geological and topographical influences on the plume's movement and direction. The chemical breakdown of the contaminants and their effects were also queried.

## Community Directory

For the most up-to-date information:  
[www.fairlington.org/meadowsindex.htm](http://www.fairlington.org/meadowsindex.htm)

### Board of Directors

- Lisa Farbstein**, President
- Mary Ellen Finigan**, Vice President
- Anne Gillis**, Secretary
- John Sitton**, Treasurer
- Nick Slabinski**, Assistant Treasurer

Address Board Correspondence to Fairlington Meadows Board of Directors, c/o Community Management Corporation.

For Board meeting minutes, visit our website, see the bulletin board at the corner of the tennis court near the pool house, or contact Sabiha Noorzai-Barbour.

### Property Management

**Community Management Corporation**  
4840 Westfields Boulevard, Suite 300  
Chantilly, VA 20151  
(703) 631-7200

**Sabiha Noorzai-Barbour**, Portfolio Manager  
[sabiha.noorzai-barbour@cmc-management.com](mailto:sabiha.noorzai-barbour@cmc-management.com)

### Onsite Maintenance

**Craig Robbins**, Maintenance Manager  
**Ricky Henderson**, Maintenance Assistant  
(703) 820-6799

### Towing Requests

**A-1 Towing of Northern Virginia**  
Tel: (703) 979-2110 or (703) 416-0710